

Welcome!

First Congregational Church
of Webster Groves United Church of Christ



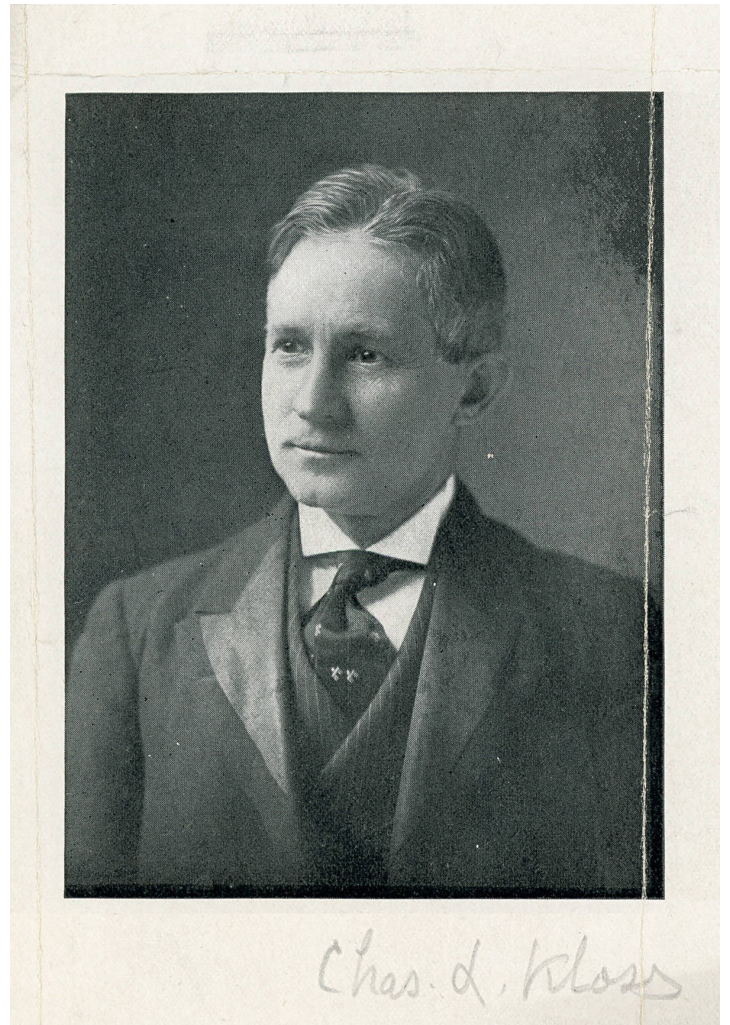
Seek Christ in each. Serve God in all.

JANUARY 28, 2024
HERITAGE SUNDAY

*We respond to God's call
by welcoming everyone
regardless of ability, age, ethnicity,
race, gender identity,
sexual orientation or
socio-economic background.*

*To proclaim in word and deed
the love of Christ,
we affirm that all may share in
the full life, ministry, fellowship,
responsibilities and blessing
of our congregation.*

*No matter who you are
or where you are on life's journey,
you are welcome here.*



Order of Worship

An asterisk () indicates that worshipers are invited to stand in body or in spirit.*

PRELUDE *My Faith Looks Up to Thee* arr. Hal Hopson

WELCOME Rev. Dr. Laurel Hayes, *Liturgist*
*At this time, we invite you to complete an entry in the Friendship Booklet
and to silence the ringer on any cellular device you may have with you.*

TOLLING THE BELL

LIGHTING THE CANDLES

***RAISING THE COVENANT** *Covenant of 1977*

We who are called of God into this Christian community covenant together: to seek to know the will of God, to experience the joy and struggle of discipleship, to proclaim in word and deed the love of Christ, and to work for peace and justice among all people. We trust God's promise of grace and forgiveness and the presence of the Holy Spirit in our trials and rejoicing.

***GATHERING HYMN** *Gather Your Children* Jaroslav Vajda, 1985
(Tune: SLANE)

Gather your children, O Savior, in peace,
And— draw us to you with your passionate pleas;
Still seek us and call us to come and be blest,
To find in your arms, Lord, safety, comfort, and rest.

Love be our banner, forgiveness our theme,
Compassion our nature, your vision our dream;
Who knows what the Spirit of God yet can do,
What joy may be tasted, or what promise come true!

***RITUAL OF APPROACH**

Invitation* (Responsive – Liturgist; **People) based on Micah 6
With what shall we come before our God? Shall we come before God with
burnt offerings, with calves a year old and rams and rivers of oil? Shall we
give our firstborn for transgressions, our children for the sin of our souls?
What does our God require?

**That we do justice, love kindness, and walk humbly with
God.**

**Prayer of Confession* (Unison) inspired by the Beatitudes (Matthew 5)

**O God, despite the constancy of your Word, sometimes it has
seemed to us that you have not been speaking. We have been
“poor in spirit,” have not done what you require, and we have
felt more lost than found. Still here we are, where we know that
we can count on you to be. So, be with us now, as we listen for
your Word and watch for your will, in Christ's name. Amen.**

**Singing God's Glory* *Glory to God in the Highest* Tune: GLORIA (HAAS)
The congregation repeats each line of the following after the leader(s):
Glory to God! Glory to God! Glory in the highest!
To God be glory forever!
Next, the leader(s) direct the congregation in harmonizing the following:
Alleluia! Amen! Alleluia! Amen!

NOT FOR CHILDREN ONLY Johari Hunt, *Coordinator of Faith Formation*
The children are invited forward for a time of enrichment.
Afterward, they may attend Kids Church or return to their seats.

THE WORD SHARED

From the Writings Psalm 111 Pew Bible, p. 551
From the Gospels Mark 1:21-28 p. 912
Response
Hear what the Spirit is saying to the people.
Thanks be to God.

ANTHEM *Draw the Circle Wide* Mark Miller
Draw the circle, draw the circle wide.
Draw the circle, draw the circle wide.
No one stands alone, we'll stand side by side.
Draw the circle, draw the circle wide.
Draw the circle wide, draw it wider still.
Let this be our song: no one stands alone.
Standing side by side,
Draw the circle, draw the circle wide.

MESSAGE OF THE DAY "Genuine Authority" Rev. David Denoon, *Pastor*

PRAYERS OF THE PEOPLE

We Share Our Joys and Concerns

Prayer of the Day

Prayer of Our Savior (Unison)

Our Father who art in heaven, hallowed be thy name. Thy kingdom come, thy will be done on earth as it is in heaven. Give us this day our daily bread, and forgive us our sins, as we forgive those who sin against us. Lead us not into temptation, but deliver us from evil; for thine is the kingdom, and the power, and the glory forever. Amen.

WE OFFER OF OURSELVES

Opportunities to Give and Gather

**Song of Praise* *Doxology* Tune: OLD 100TH
Praise God, from whom all blessings flow!
Praise God, all creatures here below!
Praise God, above you heavenly host:
Creator, Christ, and Holy Ghost. Amen.

**Prayer of Dedication* (Unison)

O Holy Spirit, as did the first disciples we pool our resources so that together we may make a difference. Bless the gifts we make of our labors and ourselves, so that in our faithfulness our works may bless others who, like us, are poor in spirit but strive on; in Jesus' name. Amen.

***HYMN OF PARTING**

Anniversary Hymn
(Tune: LANCASHIRE)

J. R. Bettis, 1916

Our forebears' sure foundation — the Word of God alone;
In faith the walls they builded with Christ the Cornerstone.
Their creed: the great Life-giver, Spirit and holy Son,
The heart all clean, and service of love for everyone.

Ancestors now long vanished, the church they reared lives on.
We meet, our God to honor for all that God hath done:
So many years of progress, of happiness and peace,
Of hallowed Christian union and concord ne'er to cease.

Thus far the Lord hath led us; shall we to God be true?
Shall sloth and worldly hung'ring withhold our Master's due?
Not so: our promise sacred, with humble, earnest prayer,
We pledge again our service with all we have and are.

***BENEDICTION**

POSTLUDE

Postlude (March)

William Stickles

During the Postlude, we encourage you to greet those around you, or to remain at your seat to enjoy the music until it has ended. In the spirit of diversity, please be attentive to the possibility that one who is seated may be meditating.

The cross image now gracing the sanctuary vault is a depiction of the three basic strokes in Japanese *sumi-e* painting. According to painter Chiura Obata, the brush strokes used in *sumi-e* represent physical reality (vertical), the passage of time (horizontal), and movement (circle). They closely resemble the Celtic cross in which the lines and circle are associated heaven (vertical), earth (horizontal), and eternity (circle). The intersection of these meanings led planners of our 150th Jubilee in 2016 to adopt the Sumi Cross as our historic symbol. The Sumi Cross above you was crafted by metal-worker Kem Williams and made possible by a grant from the Dr. Rodney M. Coe Memorial Fund. This laser-cut aluminum sculpture honors First Church's historic commitment to racial equity and social justice.

Sumi-e was originally popularized in the U.S. by Chiura Obata, an instructor at the University of California – Berkeley. Similarly, his wife Haruko introduced *ikebana*, a Japanese style of floral design, to America. In 1943, Chiura and Haruko joined First Church. They and their adult children had been displaced from their West Coast home by federal mandate, during World War II. First Church, like many Congregational churches, sheltered the Obatas for the duration of the war, providing them a home and work. Their son Gyo Obata, who died in 2022 at age 99, would become one of the founders of the architectural firm, HOK.

Books by and about the Obatas are available from the church's Holaday Library.

Wi-Fi Info

Recommended: fccwg1, fccwg2 or fccwg3 | Password for all: firstchurch.

Connecting Remotely to Worship

If you need to join us remotely, Sunday worship each week is streamed live on YouTube, starting at 10am - bit.ly/FCCWG-YT

Finding Your Way at First Church

The Nursery: The Nursery is located through the double doors at the end of the Narthex (foyer), turn left. **Nursery/Toddler Room** is on your right.

Restrooms: Family restrooms are located to the right of the Narthex (foyer) as you go to the library (look for the blue library banner) and to the left of the Narthex just before the double doors.

How to Donate to First Congregational Church

You may leave a donation in the offering plate in the Narthex, OR Send a check made payable to FCCWG at:

First Congregational Church
10 W. Lockwood Ave.
Webster Groves, MO 63119

Visit <http://firstchurchwg.org/donate> to make an electronic contribution or scan the accompanying QR code.



Midwinter Potluck TODAY, after worship

As part of our annual Heritage Sunday observance, the Midwinter Potluck will take place on **today** after the service. Parish Life Ministry will provide a variety of main dishes (pasta, jambalaya, smoked meat).

Pastoral Sabbatical to take place Summer 2024 Presentation on TODAY – after worship

Pastor Dave Denoon has been discussing his scheduled sabbatical for 2024 with members of the Executive Ministry and Pastoral Relations Committee, for a few months now. It will take place during the summer of 2024. The pastor will be offering a presentation about his upcoming time away today, after worship, as part of our Heritage Sunday observance. Where is he going? What is he doing? Find out, January 28!

Link to the Pastor's blog post at <http://tinyurl.com/fccwg-pastor>, to learn about developments regarding our last Heritage Sunday topic!

Church Merch – Stained Glass Window Stickers

There are still some stickers remaining, after our initial public offering at Christmastime! **Round stickers depicting the "Paul Davis Window"** over the chancel in the sanctuary are available from the office for purchase. Terrific as a gift or to put on your own water bottle, computer, or any other surface you decide to decorate with a reminder of your beloved sacred space, they are three inches in diameter and \$5 in cost.

Volunteer Opportunities

Signups to serve as worship leaders and/or Kids Church helpers are at

Liturgists - bit.ly/Liturgists-2024

Kids Church - bit.ly/FCCWG-Kids-2024

End of Year Statements

I have emailed and sent out the 2023 contribution statements. The emails are generated in bulk, so I do not see every individual statement. If something needs to be changed or you have any questions once you get your statement, please feel free to either email me or give me a call at the office.
Debbie Tolstoi – 314-962-0475

Quilt Auction!

Saturday, February 17, 2024

Doors open at noon. The auction will begin at 1:00 PM in Memorial Hall

- Fourteen antique and vintage quilts will be auctioned, and the proceeds will benefit local charities through the First Church Benevolence Fund.
- A certified quilt appraiser has authenticated their provenance and quality.
- Each lovingly cared for quilt is hand pieced, hand quilted and in excellent condition.
- Details about their history and construction will be available on our website at firstchurchwg.org/quilts.
- The quilts were donated by member and quilt collector, the late Marj Courtney.

For more information, contact Laura Cooper.

If you wish to make a donation, go to firstchurchwg.org/donate/ and select “Benevolence Giving” from the drop down menu

Peace & Justice Team – Next Meeting Sunday, February 11

All members and friends of First Church are encouraged to attend the monthly meetings of our Peace & Justice Team (P&J). P&J considers a wide variety of social and environmental justice issues that are before us, every day. P&J also organizes our First Saturday collections. If you have an issue that you are especially concerned about, and want to discuss how the church might address it, or if you would just like to connect with others who have a heart like yours, please consider attending.

Please join Samuel United Church of Christ for the St. Pat's Dinner to Benefit Habitat for Humanity March 9 from 4:00 to 7:30 PM at 320 N. Forsyth Blvd., Clayton

For 30 years, Samuel and our United Churches of Christ have built houses with Habitat for Humanity St. Louis. For more than a dozen years, Samuel has hosted the St. Pat's Dinner to help raise funds. **Tickets:** A suggested donation of \$20 or more for adults and \$6 for children **EVERY CENTER YOU GIVE goes to support the UCC Habitat Build.** All meat and other foods are given by the Kern Meat Company and others.

Call (314) 727-9540 or (314) 374-4183 for tickets or reservations.

The Parish Life Ministry of First Congregational Church presents “An Evening to Remember” Saturday, April 6th

Please join us in our effort to raise over \$20,000 dollars for local charities and ministries in need. Do you remember the exciting feeling of dressing up for a party, date, or special occasion? Here's your opportunity to attend this formal event featuring a multi-course dinner, live music, live auction, and fellowship. **SAVE the DATE. Details to follow.**

**First Saturday Drive-thru Donation Event
February 3, 9am – 12noon**

First Church will conduct a Day of Service for the Martin Luther King, Jr., holiday. The Peace & Justice Team will host this even, tomorrow. We will be collecting non-perishable food items for Webster Rock Hill Ministries! **Donations will be accepted from 9am to 12pm** at the doors under the awning facing the east parking lot.

Volunteers will be needed, between 8:30am and 12:30pm
Volunteer for this First Saturday
(receiving and/or sorting and/or delivering food to WRHM)
bit.ly/MLK-2024-Signup

What's Happening at First Church

Sunday, January 28

Heritage Sunday
9:45AM Nursery Care
10:00AM Worship
11:05AM Winter Potluck
11:20AM Adult Ed: "My Coming Sabbatical"
with Pastor Dave Denoon

Monday, January 29

7:00PM Scout Troops 301B & 301G –
Dickens Room

Tuesday, January 30

10:30AM Staff Meeting – Church Office

Wednesday, January 31

9:30AM Yoga with Jeanene – Inglis Room
6:00PM Bridge Club – Inglis Room

Thursday, February 1

9:00AM Journeymen – Parlor
6:00PM Canterbury Bells – Sanctuary
7:30PM Chancel Choir – Music Room

Saturday, February 3

9:00AM - Noon – First Saturday Food
Collection

Sunday, February 4

Sacrament of Christ's Table
All Ages Worship
9:00AM Brown Baggers
9:45AM Nursery Care
10:00AM All Ages Worship
11:05AM Coffee Fellowship

February Birthdays

Charlie Brader	February 5
Mary Edwards	February 6
K Wentzien	February 6
Chris von Weise	February 8
Kathy Hill	February 11
Zane Hill	February 14
Doug Barton	February 15
Erick Falconer	February 16
Pat Doyle-Grace	February 20
Martin Mills	February 21

February Shopping List

Canned Tuna, packed in Water • Tuna Helper • Canned Carrots (low or no salt)
Canned Fruit in own juices • Powdered Milk, shelf stable milk, soy milk
Diapers • Diaper Wipes • Formula with Iron

Below are the church operating results for 2023:

- Cash on hand is \$36k lower than prior year at the end of this month. The church has 2.7 months of cash on hand. The decrease in cash to the prior year correlates to Endowment transfers that were not made early in 2023
- Income is \$80k lower than budget due as follows:
 - \$32k: Pledge income was higher than budget; however, the total was \$24k less than prior year
 - (\$155k): Transfers from Endowment were lower than budget as cash on hand was adequate for operations. The Executive Ministry approved keeping funds with the Endowment to maximize earnings and investments.
 - \$33k: Use of Space fees are higher with the rental from Sts Clare and Frances and as 10 West Lockwood continues to grow
- Expenses are \$20.1k lower than budget:
 - \$24.7k: Human Resources expense was lower than budget due to open staff positions earlier in the year
 - (\$10.4k): Facility & Finance expense were higher than budget in insurance and utilities

Statement of Financial Activities

	2023	2022	Change to Prior Year	Full Year Budget	Change to Budget
			Higher/ (Lower)		Higher/ (Lower)
Income					
Pledges and Gifts	\$ 347,067	\$ 371,249	\$ (24,182)	\$ 315,000	\$ 32,067
Transfer from Endowment	135,000	175,000	(40,000)	290,000	(155,000)
Benevolence	23,087	22,572	515	15,000	8,087
Use of Space and Miscellaneous	95,237	69,778	25,459	62,115	33,122
Interest Income	22,691	28,009	(5,318)	21,000	1,691
Total Revenue	623,082	666,608	(43,526)	703,115	(80,033)
			(Higher)/ Lower		(Higher)/ Lower
Expenses					
Human Resources Expense	\$ 458,168	\$ 459,424	1,256	\$ 482,928	24,760
Facilities and Finance Expense	173,761	156,490	(17,270)	163,375	(10,386)
Benevolence Expense	32,703	35,750	3,047	32,000	(703)
Christian Education Ministry Expense	1,689	2,885	1,196	3,600	1,911
Parish Life Ministry Expense	9,575	9,744	169	11,400	1,825
Executive Ministry Expense	6,983	4,854	(2,129)	9,700	2,717
Total Expenses	682,879	669,147	(13,732)	703,003	20,124
Net Increase (Decrease) in Net Assets	\$ (59,797)	\$ (2,539)	\$ (57,258)	\$ 112	\$ (59,909)

Statement of Financial Position

	2023	2022	Variance
Cash and cash equivalents	\$ 153,932	\$ 190,268	\$ (36,336)
Property and equipment	25,357	26,814	(1,457)
Minister housing long term receivable	60,000	60,000	-
Total Assets	\$ 239,288	\$ 277,082	\$ (37,793)
Unrestricted Designated Funds	37,633	40,516	(2,884)
Restricted funds for:			
Funds in Endowment Trust	56,839	51,334	5,505
Churchyard	38,629	38,370	259
Kishlar/Dickens Room Maintenance	49,046	49,046	-
Memorial Funds	63,420	75,383	(11,963)
Long term liabilities	60,000	60,000	-
Unrestricted Net Assets	(73,764)	(37,567)	(36,197)
Total Liabilities and Net Assets	\$ 239,288	\$ 277,082	\$ (37,793)



10 West Lockwood Avenue
Webster Groves, MO 63119
314-962-0475
www.FirstChurchWG.org

Contact Information

Moderator – Doug Barton
iyell4@aol.com

Pastor – Rev. David A. Denoon
DDenoon@FirstChurchWG.org

Office Administrator – Debbie Tolstoi
Admin@FirstChurchWG.org

Coordinator of Faith Formation – Johari Hunt
Johari.Hunt@FirstChurchWG.org

Director of Music & Organist – Dr. Leon Burke
Leon.Burke@FirstChurchWG.org

Facilities Manager – Chip Isringhaus
ctil234@FirstChurchWG.org

Events Coordinator – Alicia McMinn
Events@FirstChurchWG.org

Custodian & AV Tech – Mark Metcalf

Weekend & Events Custodians –
Kayla Skiles & Onyeka Igboanuzue

Assistant Custodian – Gus McLean

Director of Ministry of Imagination, Creativity
and the Arts (MICA) – Rev. Cliff Aerie
cliff.aerie@gmail.com

Chaplain, Stillpoint Campus Ministry
Webster University – Rev. Dr. Laurel Hayes
laurel.hayes@sbcglobal.net

Director, Center for Counseling & Healing
Rev. Linda E. Smith, BCRN, HTCP/I
lesrhs@sbcglobal.net

Follow us on

Facebook

www.facebook.com/FirstChurchWG/

Instagram

<https://www.instagram.com/firstchurchwg/>

YouTube

<http://bit.ly/FCCWG-YT>

