

# COVENANT NEWS

FIRST CONGREGATIONAL CHURCH  
OF WEBSTER GROVES

**FEBRUARY 2021**

## Inside this issue:

February  
Worship Notes 2

Meet Halley Kim 3

Lenten Study 3

Moderator's Corner 4

Treasurer's Report 5

From the  
Music Director 6

Cliff's Notes 7

February Birthdays 7

Challenging Times at  
First Church 8

God is Still Speaking 9

Benevolence Update 10

Carpet & Flooring  
Progress Report 11

Missing Someone? 12

## FROM THE PASTOR

### *First Church Reborn... Again*

O SOVEREIGN, I love the house in which you dwell,  
and the place where your glory abides. (Psalm 26:8)

The world has turned another few rounds, and we find ourselves with almost half a million citizens dead in the United States. Vaccines also are circulating and beginning to be administered, but the going is slow.

When we began, back in March of last year, I immediately went to the archives to learn what our response had been in 1918 to the influenza pandemic that year. There is little mention of it anywhere in Sunday bulletins, except that the documents transitioned from a four-page folder with order of worship and announcements handed to people as they entered, to a folder mailed to people which included a brief sermon and pastoral prayer along with suggested ways of conducting devotions at home. As Kay Roush reminds us later in this newsletter, First Church adjourned from the sanctuary for six weeks in this way, during October and November, then returned to worship together on the Sunday before Thanksgiving. Sunday School resumed, a week later. The time of exile was eight weeks.

Five church members died during this time, three of them clearly from the flu – the youngest of them an 8-year-old girl. I have not been able to discern whether there were more, either at the end of 1918 or in the spring of 1919 when there was a resurgence of the virus, but the County Department of Health did not require another closing. Nevertheless, soon afterward the Rev. Lloyd Morris resigned after a barely two-year pastorate. He would be replaced by the Rev. Dwight Bradley, a dynamic, young pastor full of fresh ideas and new directions. First Church was reborn.

Our exile is lasting so much longer, as we take advantage of new technologies that accommodate the necessary absence but help us to feel a little less alone. But there is no denying the distance we're experiencing from one another. As I commiserate with people about our situation, we imagine what it might be like eventually to be in community again. Will we still have to maintain social distance? Will we need to wear masks? Will our online services continue, even though we're back in person? What will Sunday School look like? I don't know the answer to any of these, yet.

What I do know is that there are opportunities arising for us to be getting better, and I do hope that all of us will be ready to take advantage of them. Vaccines are becoming available, and healthy and safe practices are becoming clearer. We'll know soon the answer to our questions of how it will be for us when we meet again. And we've added a new staff person to walk with us into the future. This time apart seems to be nearly over. But we will be a different faith community when we are in community again. We will have adapted to the new normal, First Church reborn... again.

Peace,

*Pastor Dave Deacon*



## WORSHIP NOTES FOR FEBRUARY

*This schedule is subject to change, as need may arise.*

*All Sunday worship is recorded and available from our YouTube channel ([bit.ly/FCCWG-YT](https://bit.ly/FCCWG-YT)), starting late in the day on Saturday. The same video is played at 10:00am on Sunday as a Zoom watch party ([bit.ly/FCCWG-Worship](https://bit.ly/FCCWG-Worship)).*

**In addition to the observances mentioned below, we will also be observing February as Black History Month.**

**Sunday, February 7, 10:00AM** – *Fifth Sunday after the Epiphany; Sacrament of Christ's Table* – Isaiah 40:21-31; Psalm 147:1-11; 1 Corinthians 9:16-23; Mark 1:29-39. As the season After the Epiphany draws to a close, we have scriptures that draw our attention to our God's provisions of strength and healing, in particular the promise in Isaiah 40 that God "will bear them up with wings as eagles" and the recovery of Peter's mother-in-law in Mark 1. Drawing upon those images, but focusing on Paul's referral in 1 Corinthians 9 to the gospel as "free of charge" and himself as "free with respect to all," Pastor Dave Denoon wonders aloud, **"What Is 'Free'?"** (A virtual communion will be "shared" at 11:00am at the beginning of Virtual Coffee Fellowship.)

**Sunday, February 14, 10:00AM** – *Transfiguration Sunday; Racial Justice Sunday; Evolution & Science Sunday; Boy Scout Sunday; Presidents Day Weekend* – 2 Kings 2:1-12; Psalm 50:1-6; 2 Corinthians 4:3-6; Mark 9:2-9. When Judaism's arch-prophets Moses and Elijah join Jesus on a mountaintop (Mark 9), two things may occur the reader. First is the glorification of Jesus as the offspring of God's own being standing with the great Israelite messengers of God. Second is the strange, even disorienting, reflection of those same three prophets in the three disciples who are with Jesus there. On a Sunday honoring scientific achievements and merit badges, we explore the possible directions in which God may be calling us to pursue as individuals and as a congregation. **Message of the Day: "Bound for Greatness"**

**Ash Wednesday, February 17, 7:00PM** – Psalm 51; 2 Corinthians 5:20b-6:10. The time noted is when we will host a Zoom "watch party" to view a worship service video prepared by the Pastor and professional staff.

**Sunday, February 21, 10:00AM** – *First Sunday in Lent* – Genesis 9:8-17; Psalm 25:1-10; 1 Peter 3:18-22; Mark 1:9-15. The scriptures in this cycle of the lectionary emphasize the covenants God has made with humanity – promises for all the world (Lent 1), for the descendants of Abraham (Lent 2), for Israel in particular (Lent 3 and 4), and once again for all the world (Lent 5). Pastor Dave Denoon this week points out how each of these covenants was associated with a journey. **Message of the Day: "On the Way"**

**Sunday, February 28, 10:00AM** – *Second Sunday in Lent; CUE special offering; Seminary Sunday; Church Vocations Sunday* – Genesis 17:1-7, 15-16; Psalm 22:25-31; Romans 4:13-25; Mark 8:31-38. As we celebrate our historic relatedness with the UCC seminaries of the Midwest (Chicago, United in the Twin Cities, and Eden), Student Pastor Elston McCowan will preach.

## HALLEY W. KIM, PASTORAL ASSISTANT

The First Congregational Church of Webster Groves, United Church of Christ, proudly announces the addition to their staff of Pastoral Assistant Halley Kim. Among numerous responsibilities, Ms. Kim will be directing the church's Christian Education programs for children and youth, as well as assisting the pastor with calls and visits upon parishioners. Ms. Kim joined the staff on January 25.

Halley (née Watson) was born and raised in Webster Groves. She attended Clark Elementary, Hixson Middle School, and graduated from WGHS in 2004. She joins the ministry field from a nursing background. Halley received a Bachelor of Science degree in Nursing from Mizzou in 2008, and her nursing career has largely focused on maternity care across various settings. She is also an internationally board-certified lactation consultant (IBCLC), a former doula, and an active writer. Halley brings to First Congregational a passion for justice and a sensitivity towards those experiencing "shifts" in their faith. She is married to Rev. Simon Kim, and together they have 3 young children.

The Kims live in Crestwood, even though Halley's heart will forever be in Webster. (First Church, of course, accepts hearts from anywhere on the map!)




---

## LENTEN STUDY: *FIRST CHURCH AND AFRICAN AMERICA*

I preferred to do nothing without your consent, in order that your good deed might be voluntary and not something forced. Perhaps this is the reason he was separated from you for a while: so that you might have him back forever, ... as a ... a beloved brother—especially to me but how much more to you, both in the flesh and in the Holy One.

(Philemon 14-16)

The excerpt above is found in the letter from Paul to Philemon, a Christian slaveholder whose bondsman Onesimus had fled to Paul for justice's sake. We cannot read it today without realizing the profound effect that America's original sin of slavery has had on justice in our country and individuals in it because white America did not choose to heed Paul's demand for justice as Philemon evidently did (Tradition remembers that a freed Onesimus would eventually become a bishop in the early Church.).

Please, plan to join Pastor Dave Denoon and the rest of the professional staff for a series of presentations and discussions about racism in America, particularly as we have experienced it at First Church. Where have we been with this issue? Where are we now? What have we done about it, and what must we be doing, for the sake of establishing equality and equity as the basis of an open and affirming society?

— *All these meetings will be on Wednesdays in Lent at 7:00pm, at [bit.ly/FCCWG-Worship](https://bit.ly/FCCWG-Worship) —*

February 24 — *The Covenant Gathering, January 31, 1866*

March 3 — *First Church and Reconstruction, plus a few years: 1865-1883*

March 10 — *Brushes with Racism, 1939-1951*

March 17 — *Developing Dialogue, 1993-2017*

March 24 — *Recovery from Racism and Establishing Equity, Today and Onward*

## MODERATOR'S CORNER

One month into the new year and we prepare for the Lenten season with a new President and a COVID vaccine. We aren't there yet but moving in the right direction.

Our Church has also been active in trying to create a brighter future by taking some significant actions. When we return to services in the sanctuary (at a date still down the road) you will find new carpeting in the Narthex and the offices as well as new flooring in the hallway to Memorial Hall. This was installed the last couple of weeks in January. It was made possible by a substantial donation by Joan Musbach in the memory of Ken, and some additional funds donated by others. A new look for our new beginning!

Something else that will be new is our newly hired full-time Pastoral Assistant, Halley Watson Kim. Halley is a Webster Groves native and will direct our Christian Education Program as well as provide support with worship service and pastoral care. We are excited to have her join our journey and look forward to getting to "know her story." After having been introduced to the church at worship on January 24, there will be a chance to interact with Halley through different Zoom events. Check the E-News for these specific opportunities. It is a chance for us to offer a truly "extravagant welcome" to Halley and her family.

Another significant action involves our endowment. As you know, our financial situation has forced us to rely heavily on contributions from our endowment to meet operating expenses. The financial focus of the Strategic Planning Committee has been to develop a plan to reduce the amount and to start replenishing the endowment. I am pleased to announce that as a result of this effort and the hard work of our Treasurer, Jenny Jones, there was a budget surplus for 2020. A check has been written for \$46,000 and deposited into our endowment! That is certainly a positive step in the right direction.

Thus 2021 is off to a strong start. There is much more to do and challenges to meet. I am confident that we have the talent and the resources to make more strides in the coming months. Please stay active, stay involved and stay connected.

In Christ,  
Mark Edwards  
Moderator

## TREASURER'S REPORT

Below are the church operating results for year ending December 31st

### Statement of Financial Activities

	2020	2019	Budget	Change to Prior Year	Change to Budget
Income				Higher/(Lower) Income	
Pledges and Gifts	\$ 381,504	\$ 367,203	\$ 350,000	\$ 14,301	\$ 31,504
Transfer from Endowment	120,000	120,000	197,000	-	(77,000)
Benevolence	23,934	22,953	15,000	981	8,934
Use of Space and Miscellaneous	94,585	68,219	60,615	26,367	33,970
Interest Income	18,247	20,863	13,400	(2,616)	4,847
<b>Total Revenue</b>	<b>638,270</b>	<b>599,238</b>	<b>636,015</b>	<b>39,032</b>	<b>2,255</b>
Expenses				(Higher)/Lower Expense	
Human Resources Expense	\$ 386,280	\$ 403,393	\$ 425,530	17,112	39,250
Facilities and Finance Expense	\$ 146,582	\$ 166,135	\$ 155,800	19,554	9,218
Benevolence Expense	\$ 41,569	\$ 37,614	\$ 32,000	(3,956)	(9,569)
Christian Education Ministry Expense	\$ 1,920	\$ 2,624	\$ 4,100	704	2,180
Parish Life Ministry Expense	\$ 4,145	\$ 7,932	\$ 11,200	3,787	7,055
Executive Ministry Expense	\$ 1,694	\$ 4,050	\$ 7,200	2,355	5,506
<b>Total Expenses</b>	<b>582,191</b>	<b>621,747</b>	<b>635,830</b>	<b>39,557</b>	<b>53,640</b>
<b>Net Increase (Decrease) in Net Assets</b>	<b>\$ 56,080</b>	<b>\$ (22,509)</b>	<b>\$ 185</b>	<b>\$ 78,589</b>	<b>\$ 55,895</b>

### Statement of Financial Position

	2020	2019	Variance
Cash and cash equivalents	\$ 245,503	\$ 173,684	\$ 71,819
Pledges receivable	290,123	271,600	18,523
Property and equipment	29,994	31,451	(1,457)
Minister housing long term receivable	60,000	60,000	-
<b>Total Assets</b>	<b>\$ 625,619</b>	<b>\$ 536,735</b>	<b>\$ 88,884</b>
Accounts payable and accrued expenses	\$ 723	\$ (627)	\$ 1,350
Unrestricted Designated Funds	32,620	21,635	10,985
Restricted funds for:			
Per the Endowment Trust	45,815	39,419	6,396
Churchyard	34,007	34,340	(333)
Kishlar/Dickens Room Maintenance	58,096	58,096	-
Temporarily restricted funds for pledges	323,260	312,000	11,260
Memorial Funds	80,644	81,217	(573)
Long term liabilities	60,000	60,000	-
Unrestricted Net Assets	(9,545)	(69,346)	59,800
<b>Total Liabilities and Net Assets</b>	<b>\$ 625,619</b>	<b>\$ 536,735</b>	<b>\$ 88,884</b>

*Continued*



At the January Executive Ministry meeting, it was moved and approved to transfer the \$56,080 Net Increase in Net Assets to the Endowment Trust.

During 2020, the church applied for and revised a loan provided by the Paycheck Protection Program of the CARES Act. The Paycheck Protection Program (PPP loan) was created to provide loans to help organizations keep their workforce employed during the Coronavirus (COVID-19) crisis. The CARES Act provided that some loans could be forgiven. We received forgiveness of the loan in December, recording the full amount of the forgiven loan as Miscellaneous Income (\$62,300). Enterprise Bank facilitated the loan between the Small Business Administration and the church. A second round of PPP loan availability is being explored by the church as it appears we meet the requirements to again apply for a loan and then forgiveness.

If you have any other questions or want further detail, please let me know.

Thanks

Jennifer Jones, Treasurer

---

## FROM THE MUSIC DIRECTOR

**“When will you make an end?” the Pope asks with obvious frustration.**

**“When I am finished!” Michelangelo replies resolutely.**



This exchange is one of my favorite moments from *“The Agony and the Ecstasy,”* one of the great old movies about the painting of the ceiling of the Sistine Chapel at the Vatican. I can imagine the same conversation between any of us and COVID. Perhaps the blessing of a vaccine is to teach me patience.

Our inability to gather in large groups have been hard on our music programs, but the safety of those who trust my leadership in the choir and bell choir must be my guiding principle. I am looking forward to resuming my regular orchestra activities with other ensembles entrusted to me in September and starting earlier if the conditions are right. This seems to align with the plans of arts organizations around the country.

Perhaps the blessing to be found within this adversity for me has been trying out new things. I love learning so I have learned the basics of audio/video editing and I have embraced a limited role at Radio Arts Foundation as one of the on-air personalities. I hope you are finding the little bits of brightness in these times as well.

Look for our bell choir and members of our choir (and friends) to join us in worship very soon. From a worship standpoint I am already planning for Easter! Stay safe!

Leon Burke

## CLIFF'S NOTES



**Journey Thru Creation** moves into its next phase—Discovering our role as co-creators with the Creator. Our webinar will be held on Saturday, March 20 (the vernal equinox) at 7:00 PM. Our guests, artist Tia Richardson and ecologist Dr. Mick Smyer, will be joined by Jan Barnes as our webinar host. With video highlights from the webinar and other creative resources, Jan, I, and the JTC Team will plan a special worship service for Sunday, April 11.

As we prepare for our next webinar we will be inviting you, our congregation, to participate in a brief survey regarding our feelings about climate change. Dr. Smyer will use this to help us gain a better perspective about our views and understanding of this important issue. We hope that you will be a part of our **Journey Thru Creation** adventure as our church commits to a ministry of Earth Stewardship.

Please visit our church website for further details. Debbie Tolstoi has collated a mountain of resources, tips, and a list of local organizations to help guide us through the climate change landscape. If you have any questions about **Journey Thru Creation** please contact any of our team members: Jan Barnes, Chris von Weise, Debbie Tolstoi, John Paci, Phil Shoulberg, Elston McCowan, Ian Didriksen, Leon Berk III, and pastor Dave.

This program is made possible through a Vital Worship Grant from the Calvin Institute of Christian Worship, Grand Rapids, Michigan, with funds provided by Lilly Endowment Inc.

Rev. Cliff Aerie

Director of MICA (Ministry of Imagination, Creativity and the Arts)



Charles Brader	2/5	Erick Falconer	2/16
Mary Edwards	2/6	Allison Davis	2/20
K Wentzien	2/6	Pat Doyle-Grace	2/20
Elyse von Weise	2/8	Martin Mills	2/21
Kathy Hill	2/11	Halley Kim	2/25
Doug Barton	2/15	Sam Craig	2/26

## OUR CHURCH DURING CHALLENGING TIMES 1918 INFLUENZA PANDEMIC

The 1918 flu epidemic was another challenging time for our country, the world and for our church. WWI was being fought. The flu hit the St. Louis area in the fall of 1918. The first case reported in this area was of a soldier at Jefferson Barracks. Shortly there were many cases there and in St. Louis. It was Dr. Max Starkloff, St. Louis Health Commissioner, working with Mayor Kiel, who led the strategy, in this area, to halt the spread of the flu. By October the total number of flu cases had reached 3,000. The hospitals were over crowded.



Starkloff issued orders to restrict business hours, close theaters, pool halls and other public amusement venues. Public gatherings were banned and schools were closed. Many wore facemasks. Although there were mask slackers then, too. He worked with the Red Cross to recruit ambulance drivers and assign nurses where they were needed. He announced the closures would not be lifted until the pandemic was stamped out.

Public pressure seems to have changed his mind and the number of cases seemed to be going down. In November the ban was gradually lifted over the course of a week. For a couple of weeks the infection rate declined giving a false sense of security. At the end of November there was a spike in cases and bans were put back in place. By the end of the year the number of new cases was consistently under 50 and restrictions were lifted again. Because of quick actions by Starkloff and city leaders, St. Louis experienced one of the lowest death rates in the nation.

It appears Webster citizens followed much of Dr. Starkloff's advice. Public gatherings were closed down. Our church closed from October 13 to November 17. Sunday school followed the public schools and reopened in December. Another wave of cases struck in February 1919. Rev. Denoon wrote in the June 2020 Covenant News, "From church records, it appears that only three of our perhaps 500 constituents at the time died with influenza, and one of these was an 8-year-old girl at our South Webster Sunday School and chapel." These were challenging times but eventually, in 1919 life in the St. Louis area returned to normal.

Kay Roush,  
Historian



## GOD IS STILL SPEAKING!

a message from Pastor Merrimon

Student Pastor Merrimon Boyd has composed the following heartfelt essay as the first installment of his Senior Capstone Project. The Senior Capstone takes the final year of one's Contextual Education in a vibrant direction, "[inviting] students to analyze and address structural racism and its intersecting oppressions." The student works intentionally with the assigned faith community in seriously facing the structures of racism and applying a scripturally based, anti-racist lens. This is intended to empower both the student and the church to imagine genuinely renewing perspectives and practices. I encourage you to read his words with an open heart and to respond, if you wish, in a prayerful and considered way. To discuss this piece, you can contact Pastor Merrimon at [mboyd@eden.edu](mailto:mboyd@eden.edu) or see him at Virtual Coffee Fellowship. - Pastor Dave Denoon

Now the Lord came and stood there, calling as before, "Samuel! Samuel!" And Samuel said, "Speak, for your servant is listening." (1 Samuel 3:10)

*Steeplejacking*, a book co-authored by Sheldon Culver and John Dorhauer, seeks to address that "individuals aligned with outside political and financial interests are abusing the openness of democratic polities, in the process undermining and dividing the very institutions that these very polities attempt to mediate and govern. The consequences of this are that individual churches are being divided, and many are leaving their denominations all together."

"We need to differentiate between loving critics and critics who are looking to divide and destroy." This good advice comes from a speech given by a former president of the United Church of Christ, the Reverend John H. Thomas. But how can we if we are not talking about the issues revealed on January 6th, 2021. Is this truly "not who we are"? Were their actions on that historic Wednesday "a disgrace to our nation's Capitol" actually? If so, then this implies a reverence and respect for the building attributing a sacredness to its past while hoping to secure any future regard.

Historically, buildings have been more important than bodies and monuments have been erected to murderers. It is challenging to reconcile with an idea that free labor from black bodies built and maintained America's buildings while White America held the structures more sacred than Black Life itself. To me, when there is no regard for those made in the image of God, that is the disgrace! In my lifetime, I have not seen American solidarity over feeding hungry children - those who are the most vulnerable among us. The United States has never been united in ideals and best practices of racial equality, eliminating poverty, enabling the powerless, or improving resources for the disadvantaged - those who are overlooked every day. That is the disgrace.

How does the church respond to supporters of the attack, some of whom are friends and relatives, and some of whom are living with you in your homes? What does communion look like with individuals who share sentiments with insurrection attackers? How do you move forward?

A friend of mine who is German, a woman, and a member of the Evangelical Lutheran Church of America, continues to ask me daily if I am OK? She is concerned with "bizarre rhetoric" and has reported to me that her family has been outraged since the attack. But their feelings of outrage are divided. They are experiencing disconnection and dislocation due to their disagreements regarding race, politics, governance, and the Progressive Christian Movement. She said to me "I can't believe that I raised my children to believe this way... they are fighting with their words."

*Continued*

As we are waiting to see how the Lord will provide when presidential leadership in the U. S. has failed so utterly, we can answer God's call and report about God's appearance. God stands and calls. She has a recognizable voice in this house. God has always had an identifiable voice. But in Israel there was a rarity of God's word, a dislocation from God's voice. Their political leadership at that time was facing final judgment and removal. Only Samuel's growth and favor of the people, and his coming into leadership, would end the drought so that God's communication would rain through.

In a time of spiritual desolation and dissociation what will be your response when God calls? Will you not know Her voice? Or will you choose traditional means of instruction? Will you say like Samuel, "Speak, for your servant is listening"?

Friend and Brother,  
Merrimon Ramout Boyd

---

## GIVING TOGETHER – BENEVOLENCE



As we look out from the comfort and safety of our own homes, we are also well aware of the serious issues for others resulting from the social and economic devastation brought on by the pandemic. As individuals, many of us contribute to charities of our choice to alleviate the distress of others. As a church, we also make annual contributions to a list of charities that need our help now, more than ever.

We were blessed by being able to hold our annual Benevolence dinner and auction in 2020 just before the shutdown. We raised \$22,500 to assist others. This year we will not be able to meet in person, but First Church is determined to continue our

storied outreach to others by duplicating this amount.

With this in mind, we are asking you to again, step up in both similar and different ways. Consider writing a check to the church, with Benevolence in the memo line, in an amount similar to what you spent attending the 2020 auction. Remember, that even if you did not buy anything at the auction, nearly all of your \$35 ticket was a donation. If you would like to know how much you contributed last year contact Debbie in the church office.

If you made donations of time, talents, food, or auction items to help raise funds, please consider that part of your 2020 donation that you may choose to replicate in your benevolent giving for 2021.

Perhaps you were unable to attend past Dinner-Auction events. Is there an amount can you contribute to help us this year? You may have found that your income has been stable, but your discretionary spending reduced. Consider sharing what you can with those who have not been as fortunate.

An invitation for benevolent giving will soon be sent to you. The "Giving Together" invitation challenges us to continue our abundant giving while looking forward to the day when we can truly be together as we give.

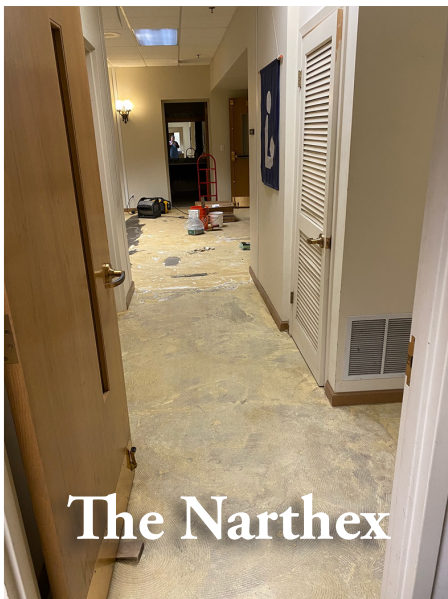
Questions? Please contact a member of the planning team. Planning team members are: Jeanene Harris, Joan Musbach, Val Paci, Jane Porchey, and Kay Roush.



## IN PROGRESS!



The Office



The Narthex



The Back Hall, Staircase & Library





**10 West Lockwood Avenue  
Webster Groves, MO 63119  
314-962-0475  
[www.FirstChurchWG.org](http://www.FirstChurchWG.org)**

## **Contact Information**

Moderator  
Mark Edwards  
[marke@wustl.edu](mailto:marke@wustl.edu)

Pastor  
Rev. David A. Denoon  
[DDenoon@FirstChurchWG.org](mailto:DDenoon@FirstChurchWG.org)

Pastoral Assistant  
Halley W. Kim  
[Halley.Kim@FirstChurchWG.org](mailto:Halley.Kim@FirstChurchWG.org)

Office Administrator  
Debbie Tolstoi  
[Admin@FirstChurchWG.org](mailto:Admin@FirstChurchWG.org)

Director of Music & Organist  
Dr. Leon Burke  
[Leon.Burke@FirstChurchWG.org](mailto:Leon.Burke@FirstChurchWG.org)

Facilities Manager  
Chip Isringhaus  
[cti1234@FirstChurchWG.org](mailto:cti1234@FirstChurchWG.org)

Custodian  
Darrell Lakies

Assistant Custodian  
Gus McLean

Director, Center for Counseling & Healing  
Rev. Linda E. Smith, BCRN, HTCP/I  
[lesrhs@sbcglobal.net](mailto:lesrhs@sbcglobal.net)

Director of MICA  
Rev. Cliff Aerie  
[cliff.aerie@gmail.com](mailto:cliff.aerie@gmail.com)

Student Minister  
Merrimon Boyd  
[mboyd@eden.edu](mailto:mboyd@eden.edu)

Student Minister  
Elston McCowan  
[emccowan@eden.edu](mailto:emccowan@eden.edu)

*Seek Christ in each. Serve God in all.*

## **MISSING OUR CHURCH FRIENDS**

While we are unable to be together, we can still reach out to each other. Telephone, write and mail notes, email or text at least one church friend each week. We all need to make an effort to be together in new ways. If you know of someone who needs support from the church contact Faye Dyer or Joan Musbach. Our Parish Cares team is active even during the pandemic and would like to know of needs to be met.

## **FOLLOW US ON**

**Facebook**

[www.facebook.com/FirstChurchWG/](https://www.facebook.com/FirstChurchWG/)

**YouTube**

<http://bit.ly/FCCWG-YT>

**SoundCloud**

[www.soundcloud.com/firstchurchwg](https://www.soundcloud.com/firstchurchwg)

